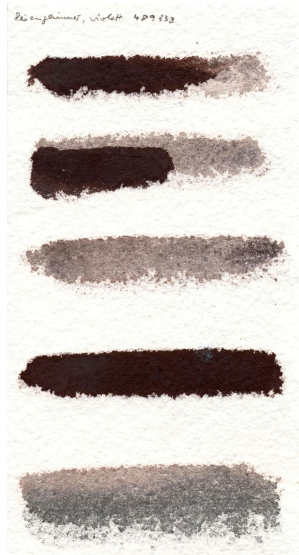


#489338 Iron Glimmer Violet

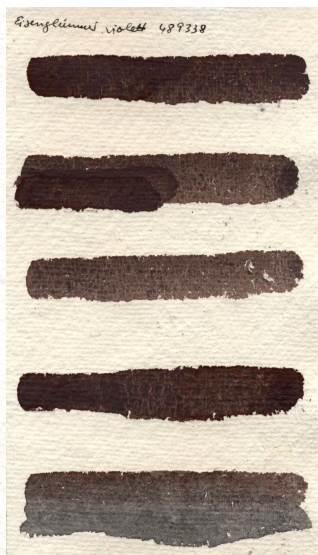
Iron Glimmer, violet lies in the color wheel in the border area between brown and violet with a high gray content. The color shows a close relationship to Caput Mortuum (#487008), but has a much weaker red component. Especially on handmade paper, it is much more reddish when applied, but loses this warm character when drying. What then remains is a light gray with a slight pinkish-purple tint. This cool character comes out particularly well when mixed, for example, with Furnace Black (#472508). With two or even three coats, there is a disproportionate intensification of the color depth. The color shows an open and cloudy surface without drying edges, especially on hot-pressed paper.

The mixture was created together with #472508 Furnace Black (lowest color application in each case).

Hand-made Paper



Cotton Rag Paper



Chinese Rice Paper



Hot Pressed Paper



Influence and properties of painting surfaces

The "colorfulness" or character of a pigment is influenced not only by the different binders; a significant expression is also created by the different textures of the various painting surfaces.

For example, glazing pigments appear even more "transparent" on rice paper and seem to become "one" with the painting surface. On canvas, regular or hand-made paper, on the other hand, they appear more solid and stable.

Properties of hand-made paper (German: Büttenpapier)

- Low density
- Soft, velvety
- Voluminous, full-bodied
- Firm, stable
- Absorbs a lot of water and the color penetrates deeply

Properties of Chinese rice paper

- Dissolves with "too much" water
- Transparent (as a result, the light behind the painting surface has different effects on the paint application)
- The paint soaks through the paper and is highly runny
- practically untextured

Properties of cotton rag paper

- "woven" paper with regular, tiny corrugation
- slightly shimmery effects
- The color seems to move
- Clear texture

Properties of hot pressed paper

- Certain firmness and rigidity (less flexible)
- Clear lines and contours
- Smooth, dense surface
- Less absorbent, color penetrates less into the paper and runs more evenly
- Less "shadow" due to lack of texture